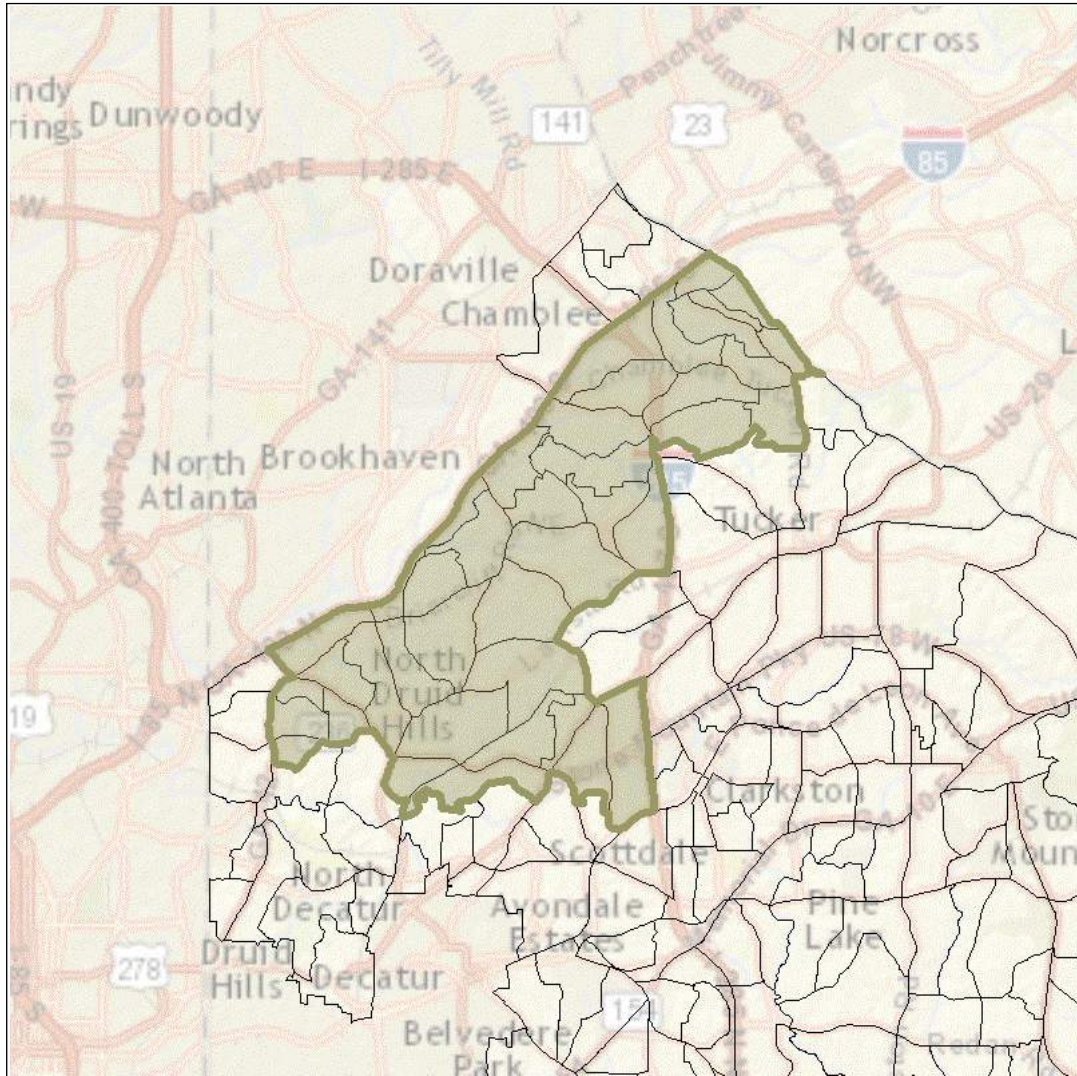




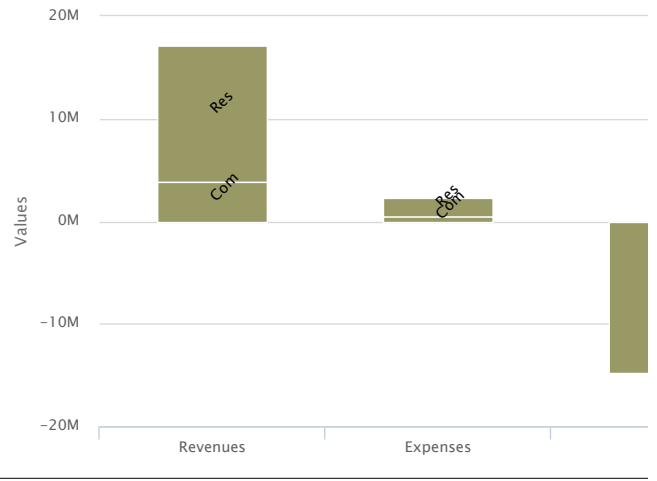
DeKalb County Economic Analysis



Police Funds (274)



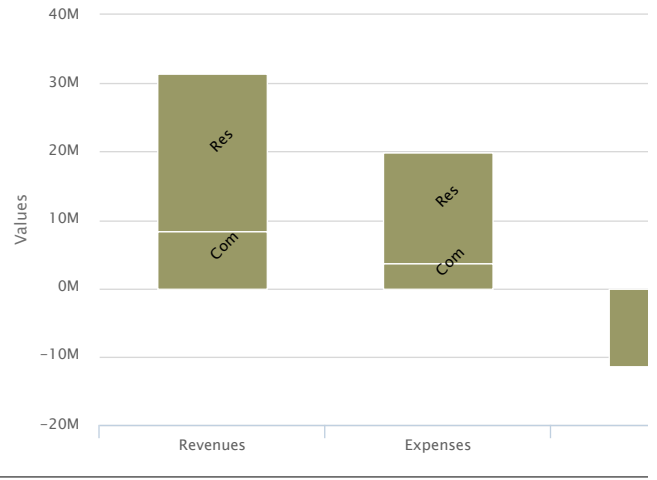
Unincorporated Funds (272)



Designated Funds (271)



All Funds (All)

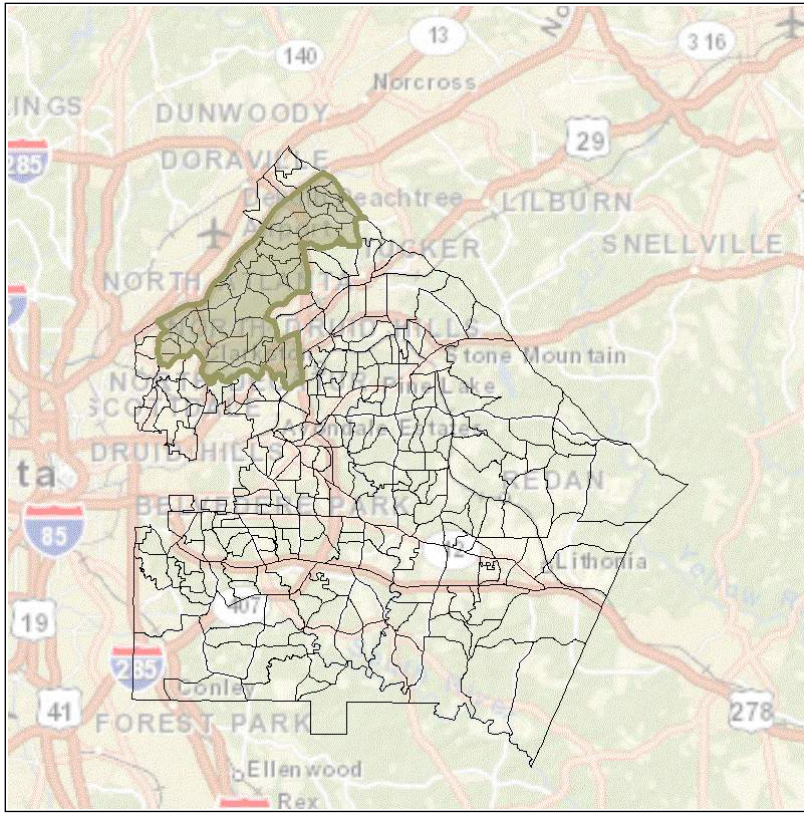


Annexation Scenario Comparison

Scenario	LaVista Hills
Residential Parcel Value	\$4,694,217,928
Commercial Parcel Value	\$1,845,825,785
Police (274) - Revenues, Residential	\$16,945,726
Police (274) - Expenses, Residential	\$12,613,915
Police (274) - NetTotal, Residential	\$-4,331,819
Police (274) - Revenues, Commercial	\$6,283,102
Police (274) - Expenses, Commercial	\$2,555,431
Police (274) - NetTotal, Commercial	\$-3,727,672
Police (274) - Revenues, Total	\$23,228,838
Police (274) - Expenses, Total	\$15,169,343
Police (274) - NetTotal, Total	\$-8,059,493
Unincorporated (272) - Revenues, Residential	\$13,261,699
Unincorporated (272) - Expenses, Residential	\$1,889,817
Unincorporated (272) - NetTotal, Residential	\$-11,371,883
Unincorporated (272) - Revenues, Commercial	\$3,898,193
Unincorporated (272) - Expenses, Commercial	\$436,195
Unincorporated (272) - NetTotal, Commercial	\$-3,461,999
Unincorporated (272) - Revenues, Total	\$17,159,894
Unincorporated (272) - Expenses, Total	\$2,326,009
Unincorporated (272) - NetTotal, Total	\$-14,833,883
Designated (271) - Revenues, Residential	\$4,365,112
Designated (271) - Expenses, Residential	\$1,885,432
Designated (271) - NetTotal, Residential	\$-2,479,680
Designated (271) - Revenues, Commercial	\$1,446,661
Designated (271) - Expenses, Commercial	\$564,432
Designated (271) - NetTotal, Commercial	\$-882,226
Designated (271) - Revenues, Total	\$5,811,772
Designated (271) - Expenses, Total	\$2,449,863
Designated (271) - NetTotal, Total	\$-3,361,903
All -Revenues, Residential	\$23,087,626
All -Expenses, Residential	\$16,389,160
All -NetTotal, Residential	\$-6,698,468
All -Revenues, Commercial	\$8,278,988
All -Expenses, Commercial	\$3,556,059
All -NetTotal, Commercial	\$-4,722,931
All -Revenues, Total	\$31,366,619
All -Expenses, Total	\$19,945,221
All -NetTotal, Total	\$-11,421,395

LaVista Hills

Selected Blockgroup Ids



- 130890215033
- 130890216033
- 130890216052
- 130890218131
- 130890217064
- 130890220012
- 130890217052
- 130890217051
- 130890217061
- 130890217062
- 130890217031
- 130890217043
- 130890218101
- 130890218093
- 130890216022
- 130890223021
- 130890223023
- 130890216031
- 130890218122
- 130890218121
- 130890217053
- 130890215032
- 130890215031
- 130890215041
- 130890216021
- 130890216042
- 130890217032
- 130890217063
- 130890222041
- 130890216032
- 130890216041
- 130890216051
- 130890216053
- 130890223022
- 130890218081
- 130890218082
- 130890218141
- 130890218142
- 130890218143
- 130890218144