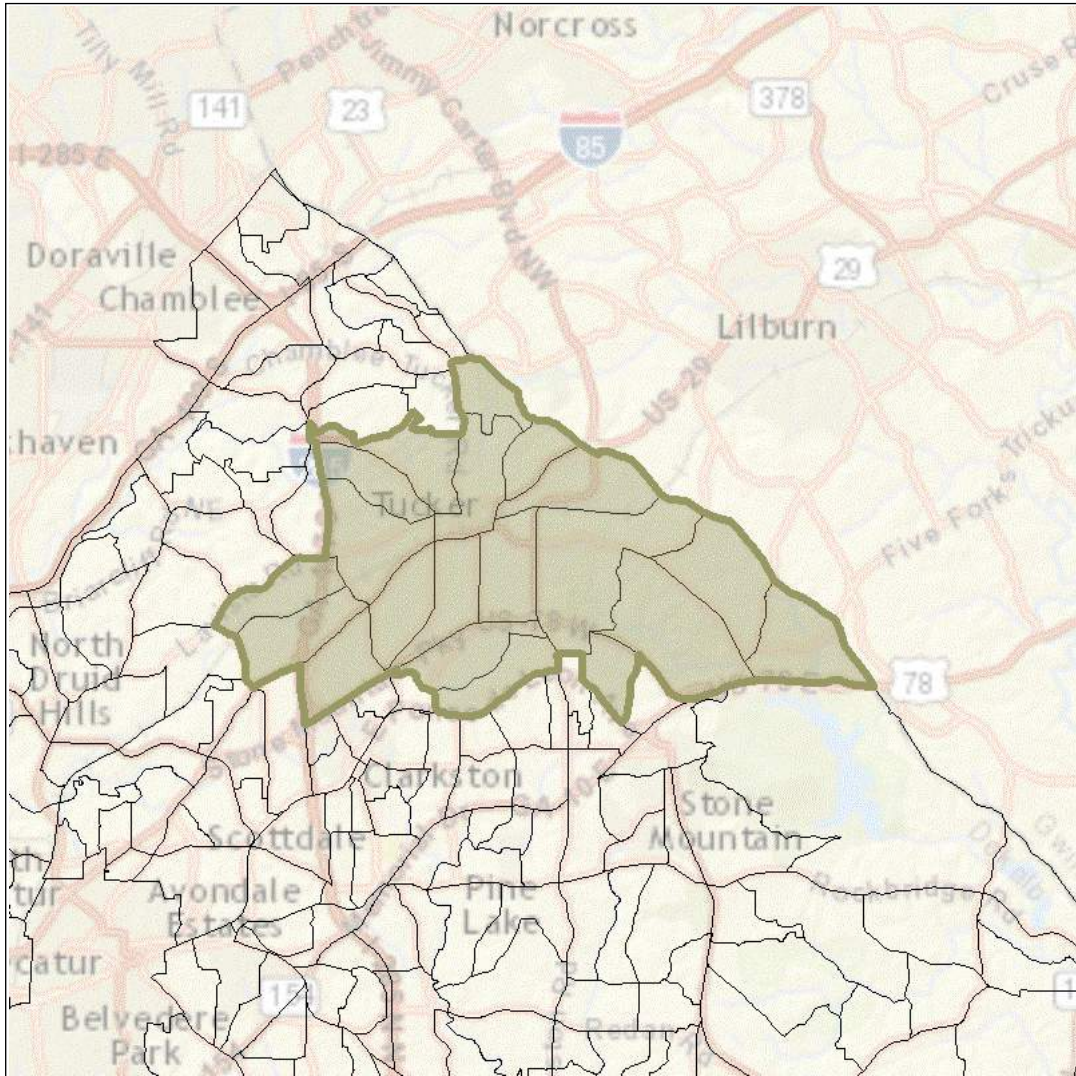




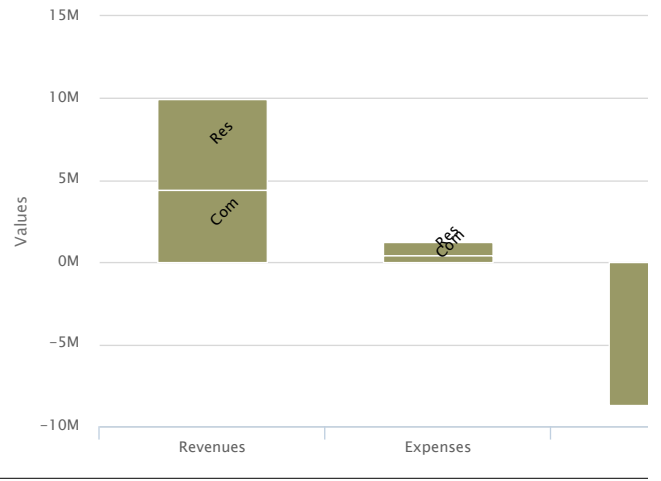
# DeKalb County Economic Analysis



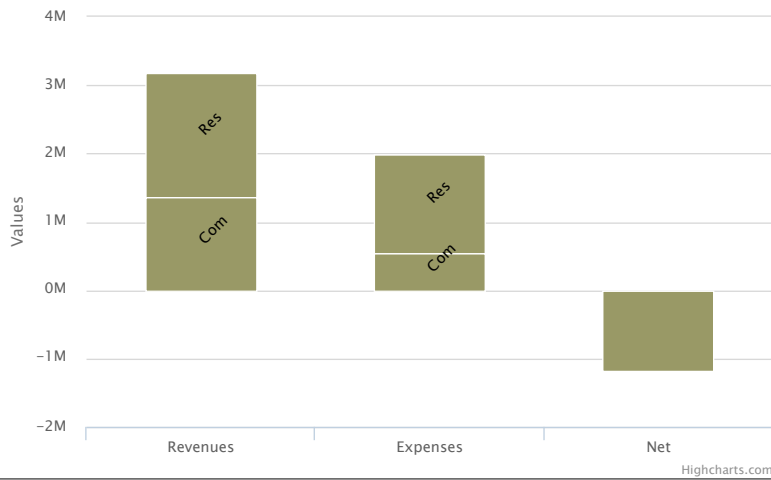
Police Funds (274)



Unincorporated Funds (272)



Designated Funds (271)



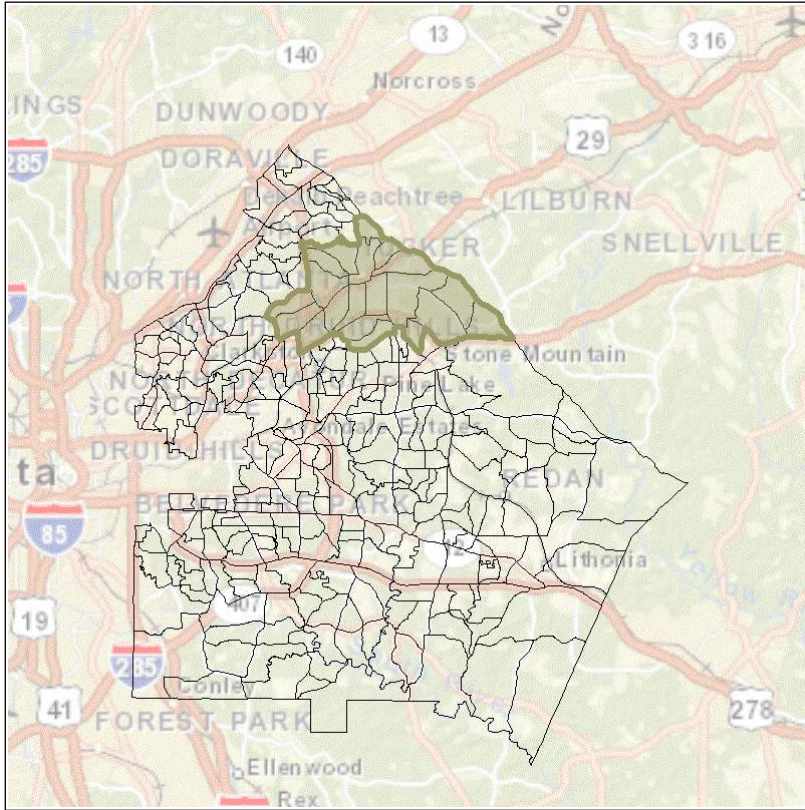
All Funds (All)



## Annexation Scenario Comparison

Scenario	Tucker
<b>Residential Parcel Value</b>	<b>\$1,863,107,300</b>
<b>Commercial Parcel Value</b>	<b>\$772,431,485</b>
<b>Police (274) - Revenues, Residential</b>	<b>\$6,952,491</b>
<b>Police (274) - Expenses, Residential</b>	<b>\$4,805,608</b>
<b>Police (274) - NetTotal, Residential</b>	<b>\$-2,146,878</b>
<b>Police (274) - Revenues, Commercial</b>	<b>\$5,244,172</b>
<b>Police (274) - Expenses, Commercial</b>	<b>\$2,703,532</b>
<b>Police (274) - NetTotal, Commercial</b>	<b>\$-2,540,641</b>
<b>Police (274) - Revenues, Total</b>	<b>\$12,196,663</b>
<b>Police (274) - Expenses, Total</b>	<b>\$7,509,140</b>
<b>Police (274) - NetTotal, Total</b>	<b>\$-4,687,520</b>
<b>Unincorporated (272) - Revenues, Residential</b>	<b>\$5,532,332</b>
<b>Unincorporated (272) - Expenses, Residential</b>	<b>\$830,798</b>
<b>Unincorporated (272) - NetTotal, Residential</b>	<b>\$-4,701,536</b>
<b>Unincorporated (272) - Revenues, Commercial</b>	<b>\$4,407,682</b>
<b>Unincorporated (272) - Expenses, Commercial</b>	<b>\$391,877</b>
<b>Unincorporated (272) - NetTotal, Commercial</b>	<b>\$-4,015,806</b>
<b>Unincorporated (272) - Revenues, Total</b>	<b>\$9,940,013</b>
<b>Unincorporated (272) - Expenses, Total</b>	<b>\$1,222,673</b>
<b>Unincorporated (272) - NetTotal, Total</b>	<b>\$-8,717,340</b>
<b>Designated (271) - Revenues, Residential</b>	<b>\$1,824,988</b>
<b>Designated (271) - Expenses, Residential</b>	<b>\$1,454,533</b>
<b>Designated (271) - NetTotal, Residential</b>	<b>\$-370,455</b>
<b>Designated (271) - Revenues, Commercial</b>	<b>\$1,353,003</b>
<b>Designated (271) - Expenses, Commercial</b>	<b>\$538,222</b>
<b>Designated (271) - NetTotal, Commercial</b>	<b>\$-814,782</b>
<b>Designated (271) - Revenues, Total</b>	<b>\$3,177,994</b>
<b>Designated (271) - Expenses, Total</b>	<b>\$1,992,753</b>
<b>Designated (271) - NetTotal, Total</b>	<b>\$-1,185,240</b>
<b>All -Revenues, Residential</b>	<b>\$9,462,608</b>
<b>All -Expenses, Residential</b>	<b>\$7,090,940</b>
<b>All -NetTotal, Residential</b>	<b>\$-2,371,669</b>
<b>All -Revenues, Commercial</b>	<b>\$7,134,720</b>
<b>All -Expenses, Commercial</b>	<b>\$3,633,629</b>
<b>All -NetTotal, Commercial</b>	<b>\$-3,501,093</b>
<b>All -Revenues, Total</b>	<b>\$16,597,327</b>
<b>All -Expenses, Total</b>	<b>\$10,724,570</b>
<b>All -NetTotal, Total</b>	<b>\$-5,872,758</b>

# Tucker



## Selected Blockgroup Ids

- 130890219103
- 130890219122
- 130890217042
- 130890218061
- 130890218052
- 130890218063
- 130890218091
- 130890218092
- 130890218094
- 130890218103
- 130890218102
- 130890217041
- 130890219121
- 130890218051
- 130890218053
- 130890220011
- 130890218062
- 130890218095
- 130890219123
- 130890219132